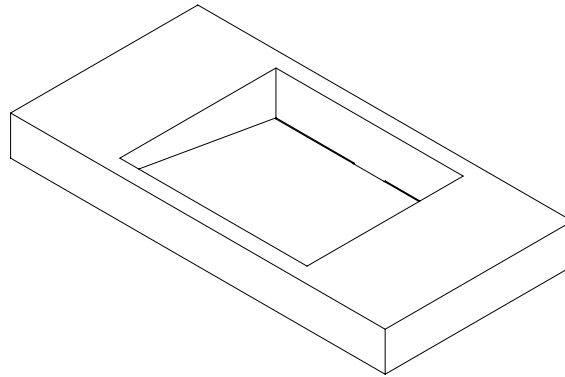


TSL.MON.D.48

MONOLITH BASIN SYSTEM TYPE D | 48" LENGTH SINGLE USER

The Type D series is an ADA-compliant, solid surface sink designed for use with wall-mounted fixtures. The 48" single user basin has a 12" countertop on both sides. This basin style is also available in one, three, or four-user lengths, as well as a 38" single-counter version.



Composition

Sink	100% solid surface (acrylic/resin)
Brackets	Stainless steel
Pipeskirts	Stainless steel (brushed or powder-coated)

Fabrication

Fabricated in Canada by CNC machine with hand-finishing.

Approvals + Compliances

IPC 2009, 2012, 2015, 2018, 2021
IRC 2009, 2012, 2015, 2018
UPC 2009, 2102, 2015, 2018, 2021
NPC 2005, 2010, 2015
CSA B45.5 / IAPMO Z124-2107
ADA
LEED

Installation Requirements

ADA	Follow ADA basin height requirements to ensure compliance. Pipeskirts are available to conceal the pipe system.
-----	---

Optional Accessories

Side skirts	Optional caps for pipeskirts where sink is installed with exposed sides.
-------------	--

8745 Washington Boulevard, Studio D
Culver City CA 90232
310 410 5008
info@thesplashlabusa.com
thesplashlabusa.com



Variant Codes

TSL.Mon.D.48	48"L x 24"D side counters no pipeskirt
TSL.Mon.D.48.PS2.SS	48"L x 24"D side counters stainless steel pipeskirt, straight
TSL.Mon.D.48.PS2.WH	48"L x 24"D side counters white powder coat pipeskirt, straight
TSL.Mon.D.48.PS2.BK	48"L x 24"D side counters black powder coat pipeskirt, straight

Related Products

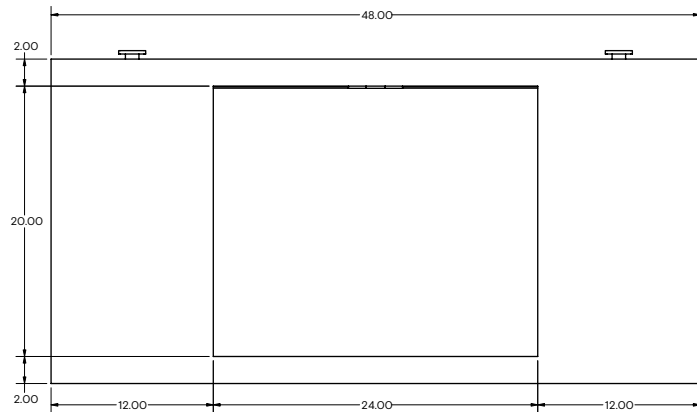
TSL.C.3Set	The Complete Channel System	TSL.Mon.D.38	D Series 1-User, single counter
TSL.Mon.A	The Monolith A Series	TSL.Mon.D.120	D Series 3-User
TSL.Mon.C	The Monolith C Series	TSL.Mon.D.156	D Series 4-User

For specifier/architect approval:

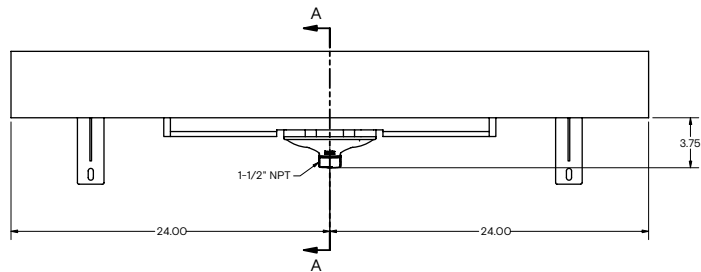
Project name		Pipeskirt finish	
Solid surface brand		Finish name/code	
Signed		Date	

Technical Drawings

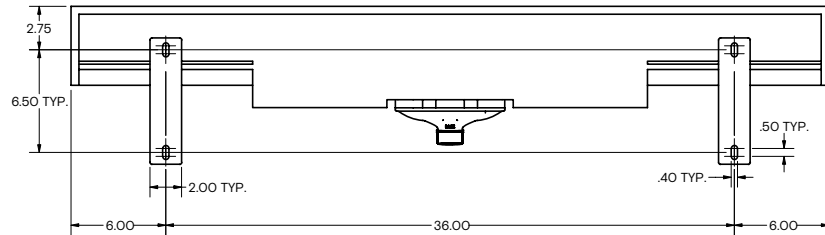
Top



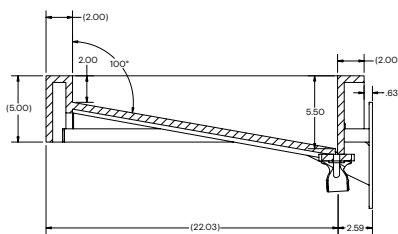
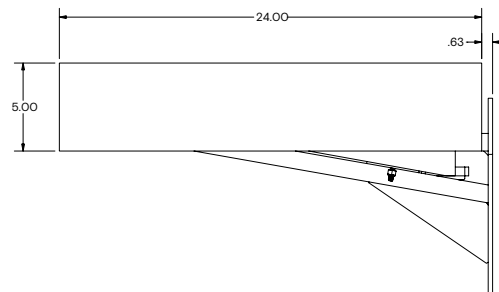
Front



Fixing

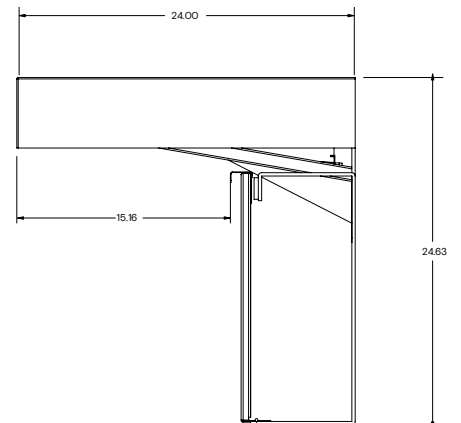


Side



SECTION A-A
SCALE 1/4

Pipeskirts



8745 Washington Boulevard, Studio D
Culver City CA 90232
310 410 5008
info@thesplashlabusa.com
thesplashlabusa.com