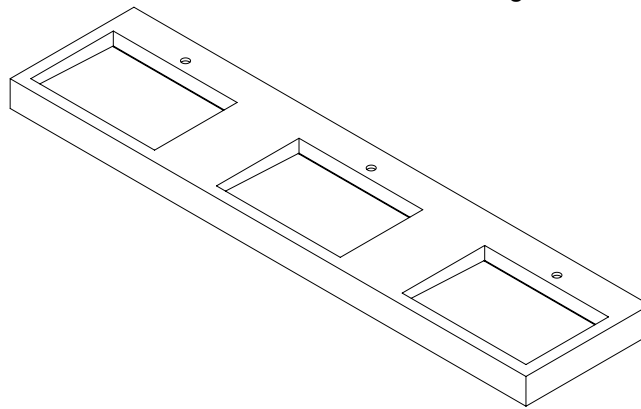


TSL.MON.B.100

MONOLITH BASIN SYSTEM TYPE B | 100" LENGTH THREE USER

The Type B series is an ADA-compliant, solid surface sink designed for use with deck-mounted fixtures. The basin includes a 12" countertop divider between each user station. This basin style is also available in one, two, or four-user lengths.



Composition

Sink	100% solid surface (acrylic/resin)
Brackets	Stainless steel
Pipeskirts	Stainless steel (brushed or powder-coated)

Fabrication

Fabricated in Canada by CNC machine with hand-finishing.

Approvals + Compliances

IPC 2009, 2012, 2015, 2018, 2021
 IRC 2009, 2012, 2015, 2018
 UPC 2009, 2102, 2015, 2018, 2021
 NPC 2005, 2010, 2015
 CSA B45.5 / IAPMO Z124-2107
 ADA
 LEED

Installation Requirements

ADA	Follow ADA basin height requirements to ensure compliance. Two pipeskirt styles are available to conceal the pipe system.
-----	---

Optional Accessories

Side skirts	Optional caps for pipeskirts where sink is installed with exposed sides.
-------------	--

8745 Washington Boulevard, Studio D
 Culver City CA 90232
 310 410 5008
info@thesplashlabusa.com
thesplashlabusa.com

Variant Codes

TSL.Mon.B.100.1	100"L x 24"D 1 fixture hole no pipeskirt
TSL.Mon.B.100.2	100"L x 24"D 2 fixture holes no pipeskirt
TSL.Mon.B.100.3	100"L x 24"D 3 fixture holes no pipeskirt
TSL.Mon.B.100.1.PS1.SS	100"L x 24"D 1 fixture hole stainless steel pipeskirt, angled
TSL.Mon.B.100.1.PS1.BK	100"L x 24"D 1 fixture hole black powder coat pipeskirt, angled
TSL.Mon.B.100.1.PS1.WH	100"L x 24"D 1 fixture hole white powder coat pipeskirt, angled
TSL.Mon.B.100.2.PS1.SS	100"L x 24"D 2 fixture holes stainless steel pipeskirt, angled
TSL.Mon.B.100.2.PS1.BK	100"L x 24"D 2 fixture holes black powder coat pipeskirt, angled
TSL.Mon.B.100.2.PS1.WH	100"L x 24"D 2 fixture holes white powder coat pipeskirt, angled
TSL.Mon.B.100.3.PS1.SS	100"L x 24"D 3 fixture holes stainless steel pipeskirt, angled
TSL.Mon.B.100.3.PS1.BK	100"L x 24"D 3 fixture holes black powder coat pipeskirt, angled
TSL.Mon.B.100.3.PS1.WH	100"L x 24"D 3 fixture holes white powder coat pipeskirt, angled
TSL.Mon.B.100.1.PS2.SS	100"L x 24"D 1 fixture hole stainless steel pipeskirt, straight
TSL.Mon.B.100.1.PS2.BK	100"L x 24"D 1 fixture hole black powder coat pipeskirt, straight
TSL.Mon.B.100.1.PS2.WH	100"L x 24"D 1 fixture hole white powder coat pipeskirt, straight
TSL.Mon.B.100.2.PS2.SS	100"L x 24"D 2 fixture holes stainless steel pipeskirt, straight
TSL.Mon.B.100.2.PS2.BK	100"L x 24"D 2 fixture holes black powder coat pipeskirt, straight
TSL.Mon.B.100.2.PS2.WH	100"L x 24"D 2 fixture holes white powder coat pipeskirt, straight
TSL.Mon.B.100.3.PS2.SS	100"L x 24"D 3 fixture holes stainless steel pipeskirt, straight
TSL.Mon.B.100.3.PS2.BK	100"L x 24"D 3 fixture holes black powder coat pipeskirt, straight
TSL.Mon.B.100.3.PS2.WH	100"L x 24"D 3 fixture holes white powder coat pipeskirt, straight

Related Products

TSL.R.3Set	The Complete Ribbon System	TSL.Mon.B.38	B Series 1-User
TSL.Mon.A	The Monolith A Series	TSL.Mon.B.64	B Series 2-User
TSL.Mon.C	The Monolith C Series	TSL.Mon.B.136	B Series 4-User

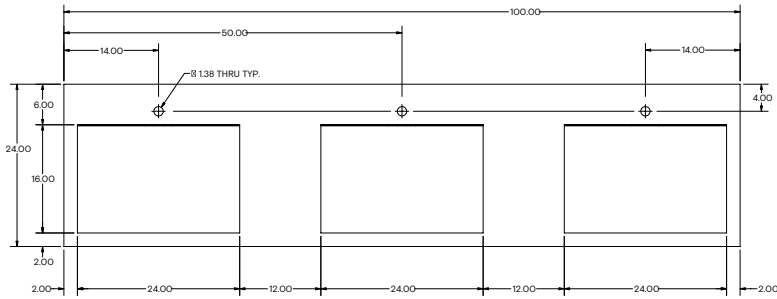
For specifier/architect approval:

Project name		Fixture holes (#)	
Pipeskirt style		Pipeskirt finish	
Solid surface brand		Finish name/code	
Signed		Date	

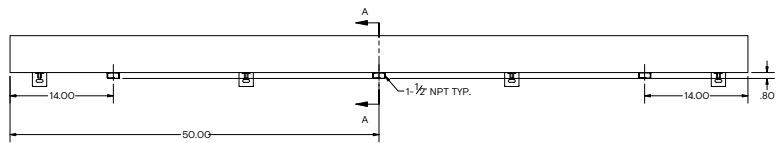
8745 Washington Boulevard, Studio D
Culver City CA 90232
310 410 5008
info@thesplashlabusa.com
thesplashlabusa.com

Technical Drawings

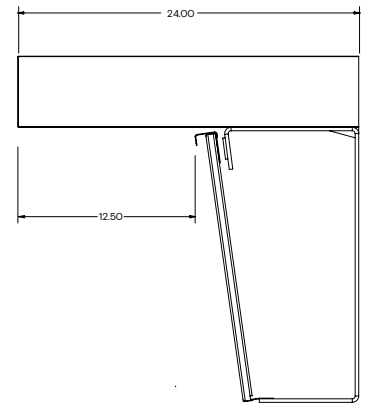
Top



Front

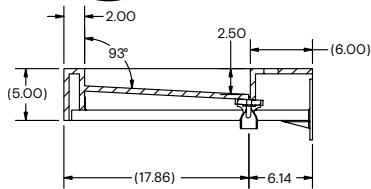


Side



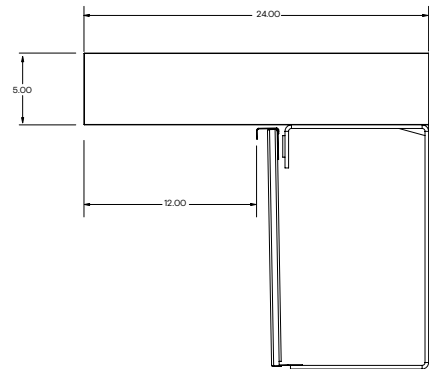
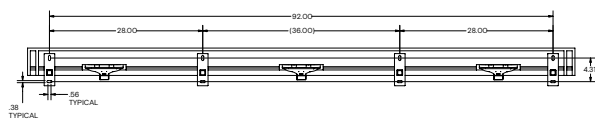
Pipeskirts - Angled Style (PS1)

Drain



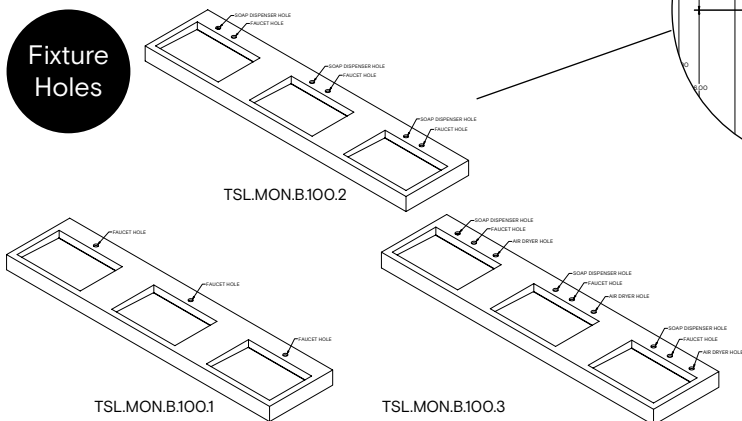
SECTION A-A
SCALE 1 / 8

Fixing



Pipeskirts - Straight Style (PS2)

Fixture
Holes



8745 Washington Boulevard, Studio D
Culver City CA 90232
310 410 5008
info@thesplashlabusa.com
thesplashlabusa.com